

Conlit

## General Product Information

ROCKWOOL stone wool products are made of basalt, a volcanic stone.

ROCKWOOL stone wool products are non-combustible with a melting point of approximately 1000°C. They are particularly suitable for thermal insulation, fire protection and sound reduction/absorption.

ROCKWOOL stone wool is inorganic and contains no nutritious substance. Therefore it will not be attacked by microorganisms. Stone wool will not rot, does not attract vermin.

No CFCs, HFCs, HCFCs, or asbestos are used in the manufacture of ROCKWOOL stone wool products.

# Conlit

## Common applications

Conlit is a specially formulated stone wool product. It can withstand high temperature under fire to be used as part of the passive fire protection systems.

For Conlit C, the product is designed with high compression resistance, recommended to use in the penetration seal system where fire resistance testing is required. Conlit C helps the penetration seal system to achieve its desired system fire rating to meet local building fire regulation.

For Conlit H, the product is designed to withstand fire exposure for a longer period with minimal shrinkage. Conlit H has been used by fire door manufacturers for fire-resistance testing.

## Facings

Conlit products are available unfaced or with aluminium foil facing.

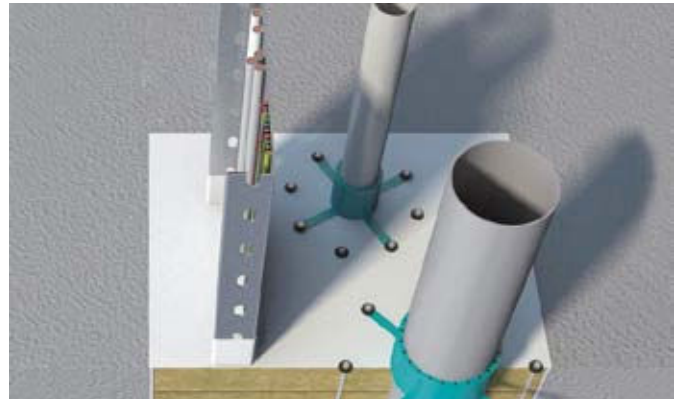
## Packaging and storage

Conlit is shrink-wrapped in polyethylene sheets for ease of handling, transportation, storage and identification. Products should be stored indoors or under a waterproof covering.

## Technical Parameters

Product Types	H110	C160	Standards
Nominal Density (kg/m <sup>3</sup> )	110	160	
Thermal Conductivity 20°C λ Values (W/mK)	0.039	0.039	ASTM C177/C518
Fire Performance	A1 Fire Classification		EN 13501-1
Water Vapour Absorption	Absorb less than 0.04 Vol %		ASTM C1104/C1104M
Water Absorption (partial immersion)	Less than 0.5kg/m <sup>2</sup>		EN 1609:97

*Note: Please note that Conlit H110 product appears to be dark greyish in colour due to the characteristic of the product.*



## Dimensions

Standard sizes and densities

Thickness (mm).....25, 50, 75 and 100mm  
Length x Width (mm).....1200mm x 600mm

*Disclaimer: The information contained in this data sheet is believed to be correct at the date of publication. ROCKWOOL does not accept responsibility for the consequences of using Conlit in applications different from those described above.*