

Safing for Curtain Wall



General Product Information

ROCKWOOL® Rocksafes products are specially developed to provide fire protection to the systems they are applied to. They are manufactured from long fine fibres, spun from molten natural rock, bonded with thermosetting resin. The products are asbestos free. The uniquely formulated contents in the product makes it slightly greyish in colour, ensuring stability of the fibre structures and provides a rigid surface when exposed directly to heat during a fire. The products have remarkable resistance to shrinkage at temperatures encountered in fire conditions.

Applications

Rocksafes products are developed to be used as a fire protection to curtain wall applications. The key application is in sealing of any openings in non-visible areas such as those between the curtain wall and the perimeter edge of the floor slab. This can prevent fire spread and maintain the fire compartment on each floor of the building in an event of fire.

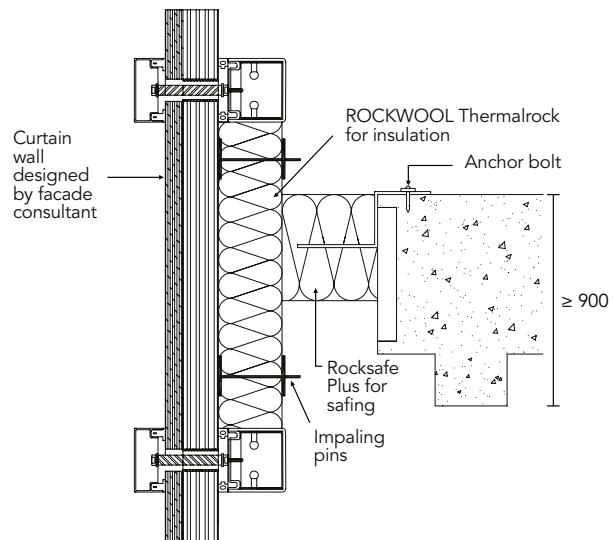
Fire Performance

Rocksafes products have been subjected to fire resistance test in accordance to BS476 Part 20, in accredited laboratory and achieved two hours fire rating, meeting the integrity and insulation criteria. In this fire test, Rocksafes Plus of 135mm thickness has been compressed to at least 15% of its total width and fitted into the various openings of the concrete floor slab. Further assessment has been obtained for its usage in safing application for curtain wall. Please refer to your local authority for applicable approvals required on this product.



Basic Installation Guideline

Rocksafe products are lightweight and easy to handle. Galvanized steel Z- brackets are inserted into the mid thickness of the slab, at every 500mm length, at the centre of the slab. Then the slabs are compressed 15% and inserted into the safining opening. Secure the galvanized Z- Bracket to the floor slab with anchor fixing. Rocksafes are pre-laminated at non-fire side and to be seal off with aluminium tape at all joint in order to meet the requirement of smoke tightness.



Sectional view of Rocksafes at perimeter edge of curtain wall

Technical Parameters

Properties	Rocksafes Plus	Standards
Dimensions: Thickness (mm) Length & Width (mm)	135mm 1200mm x 600mm	EN823 EN822
Density	80kg/m ³	EN826
Thermal Conductivity at 20°C	0.035W/mK	ASTM C518
Melting Point	≥ 1000°C	DIN4102-17
Fire Performance	Non-combustible 2 hours fire rating*	BS476 Part 4 BS476 Part 20
Water Absorption (Partial Immersion)	Less than 0.5kg/m ²	EN1609:97
Water Vapour Absorption	Absorb < 0.04%Vol	ASTM C1104/1104M
Health & Safety: Odour Emission Fungi Resistance	No perceptible odour present Does not encourage growth of fungi	ASTM C665-06 ASTM 1338

* Please refer to your ROCKWOOL sales representative for the local authority's required approvals



Disclaimer: The information contained in this data sheet is believed to be correct at the date of publication. ROCKWOOL does not accept responsibility for the consequences of using Safing for Curtain Wall in applications different from those described above.

ROCKWOOL (Thailand) Limited

WHA Eastern Industrial Estate (Map Ta Phut)
No.1 Soi G2, Pakornsongkrohraj Road
Huaypong, Muang
Rayong 21150 Thailand
T (+66) 3868 5110
T (+66) 3868 4938

www.rockwoolasia.com